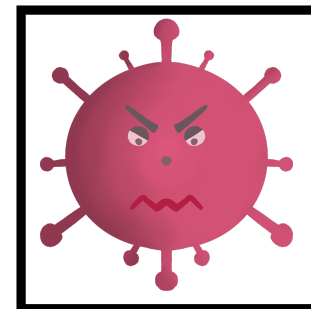
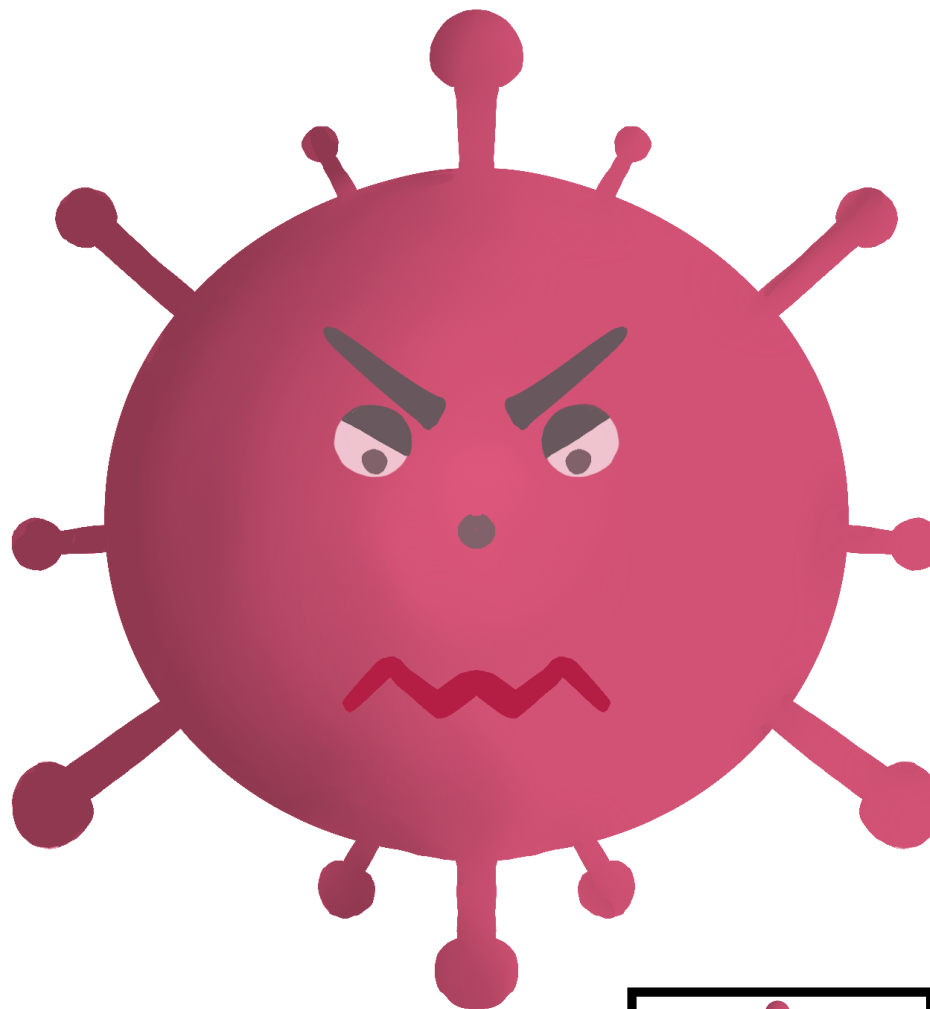


EL

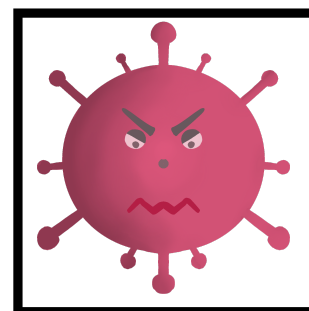


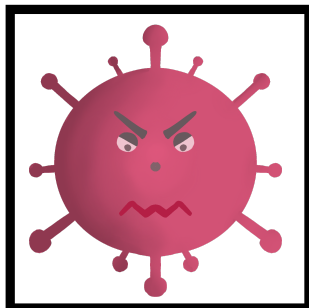
DE



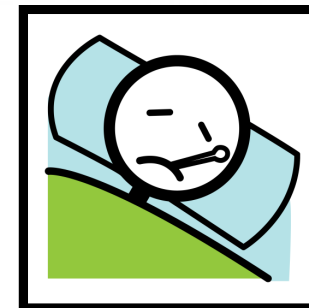


ESTE ES



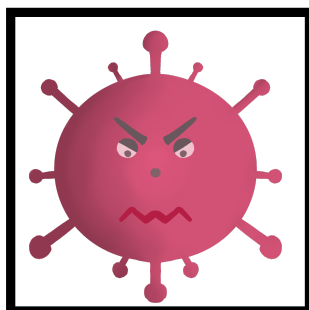


NOS PONE

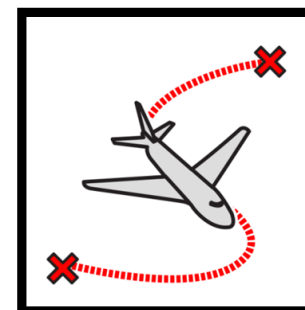
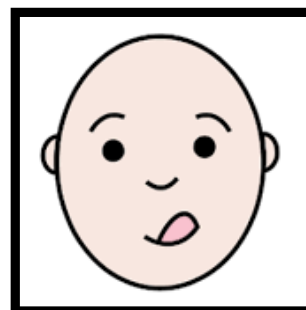




A

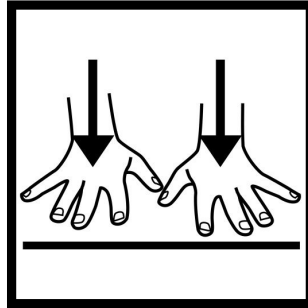
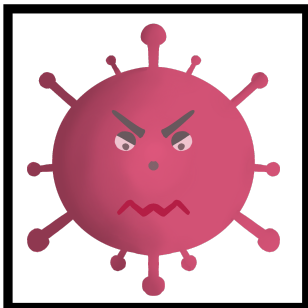


LE



Autor pictogramas: Sergio Palao Procedencia: ARASAAC (<http://arasaac.org>)
Licencia: CC (BY-NC-SA) Ilustración: Edurne Ganuza Autoras: Sara Duque y Leire Buzunariz

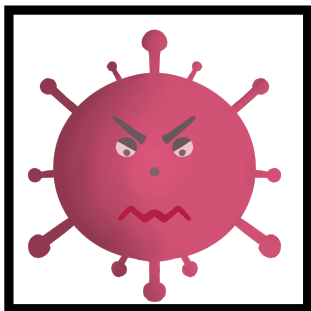
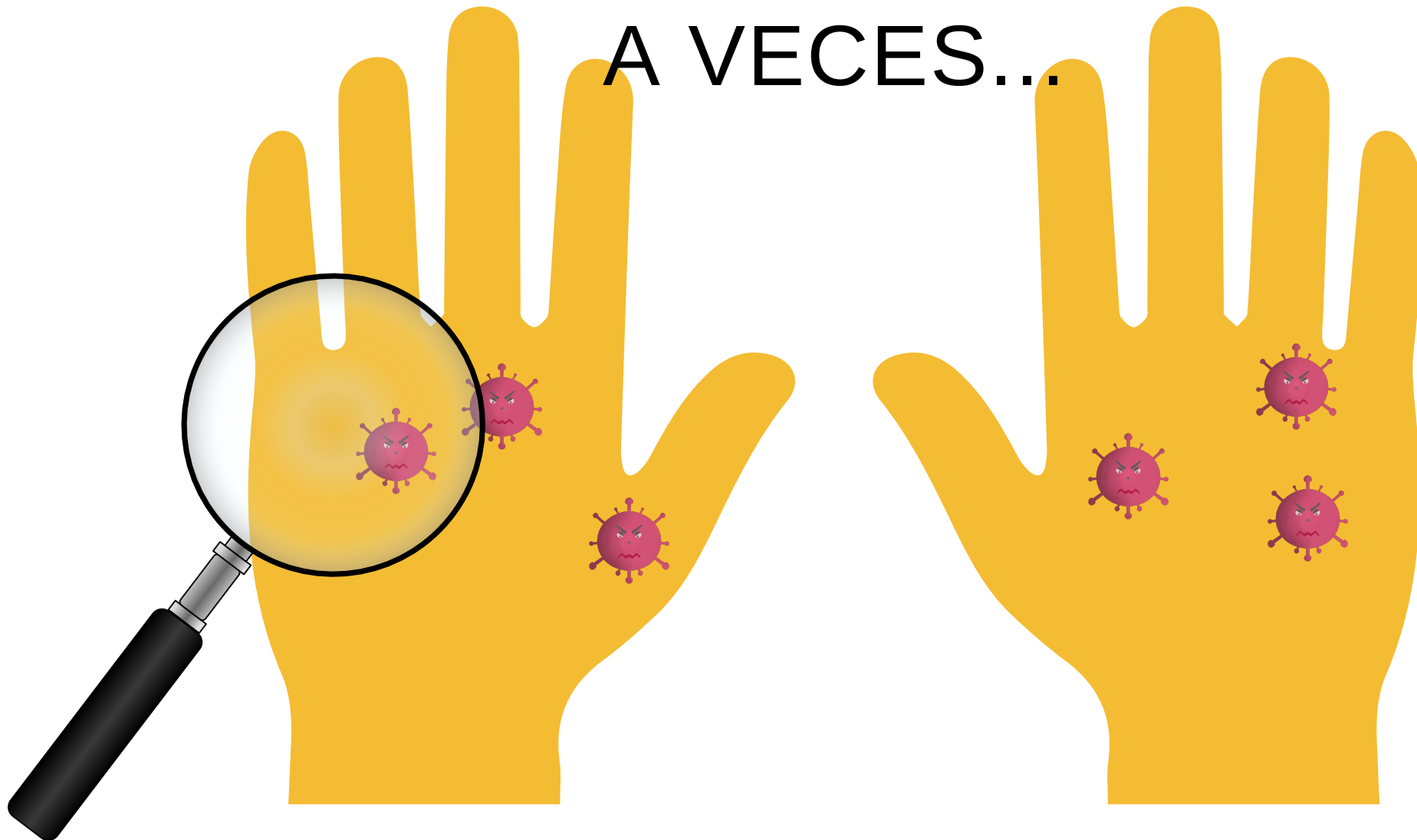




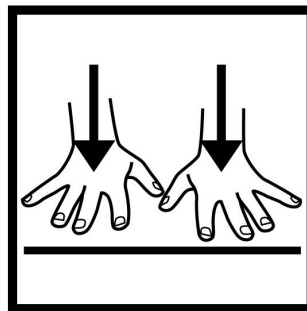
EN LA



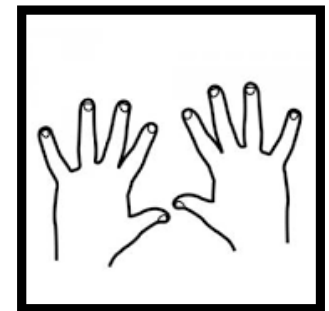
A VECES...

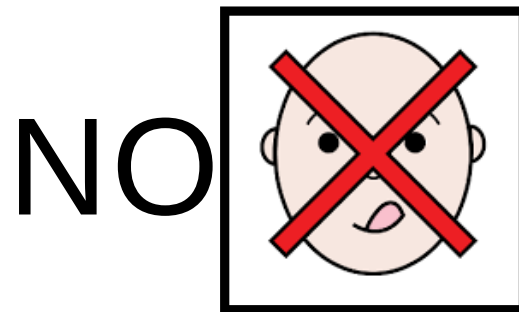
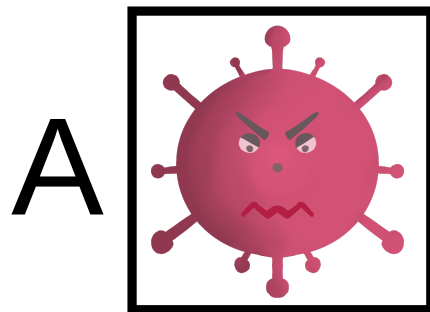
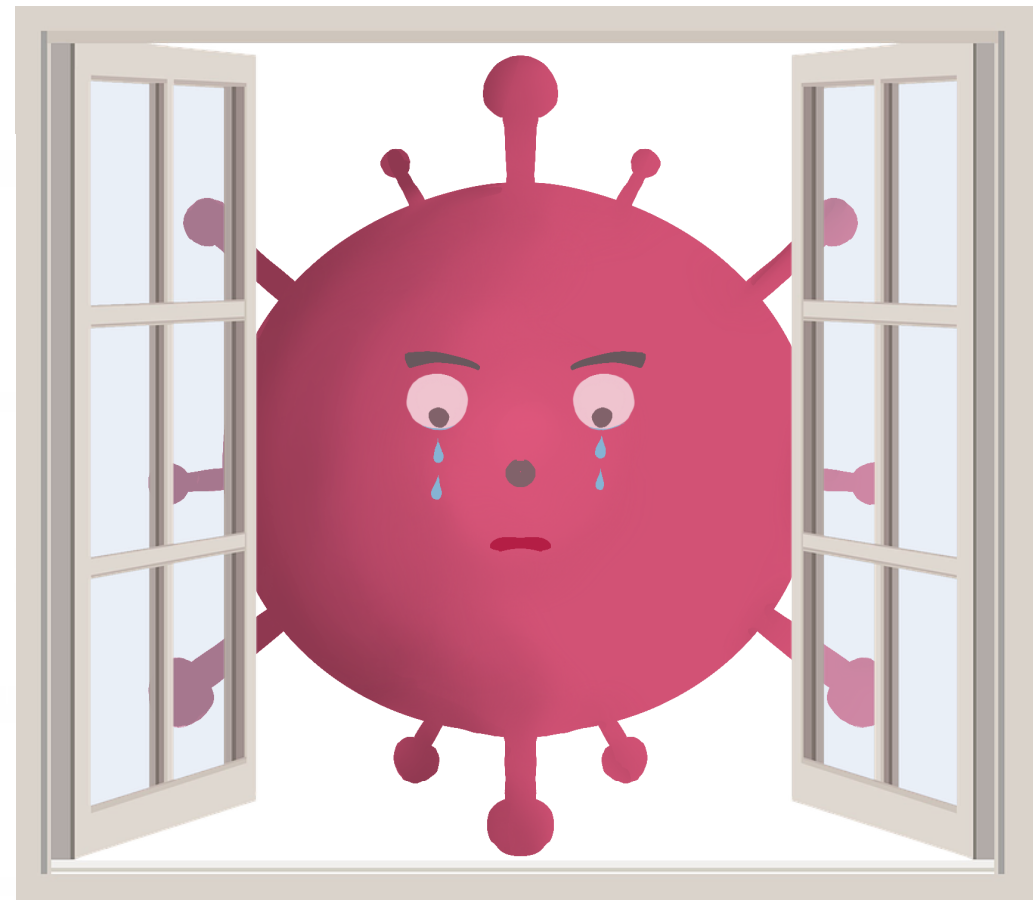


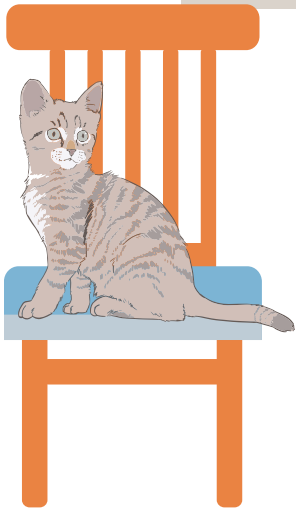
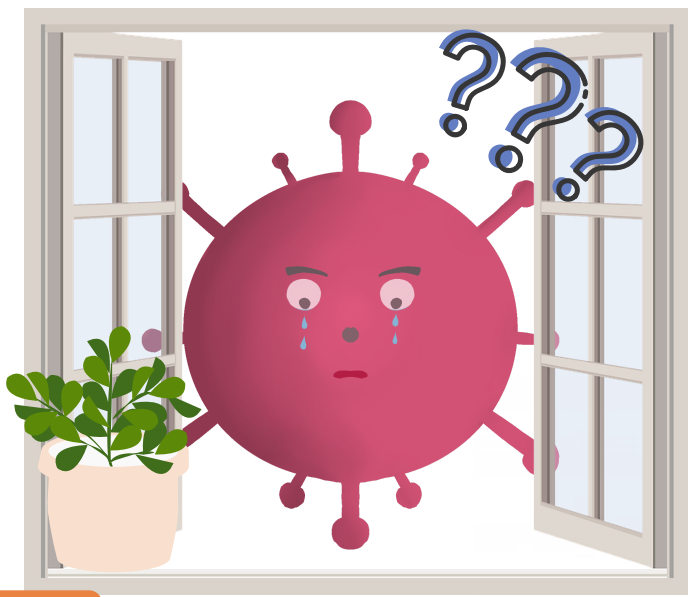
TAMBIÉN



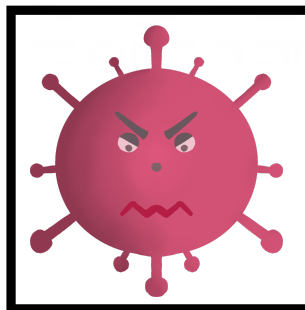
EN LAS



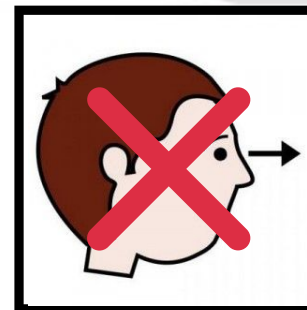


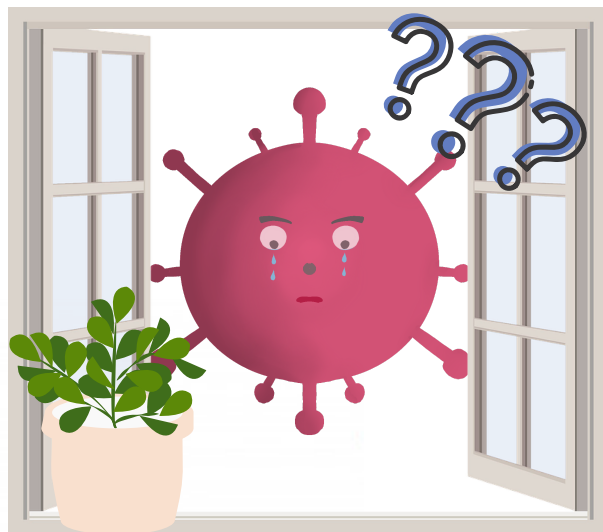


EN



NO

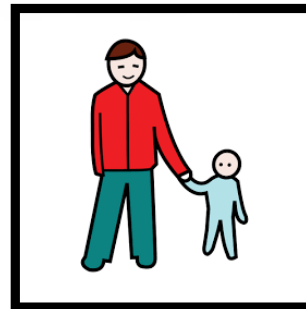




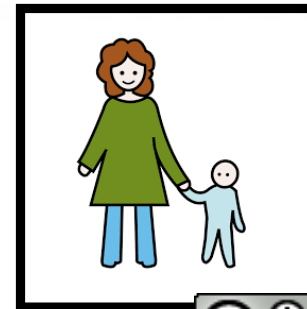
EN

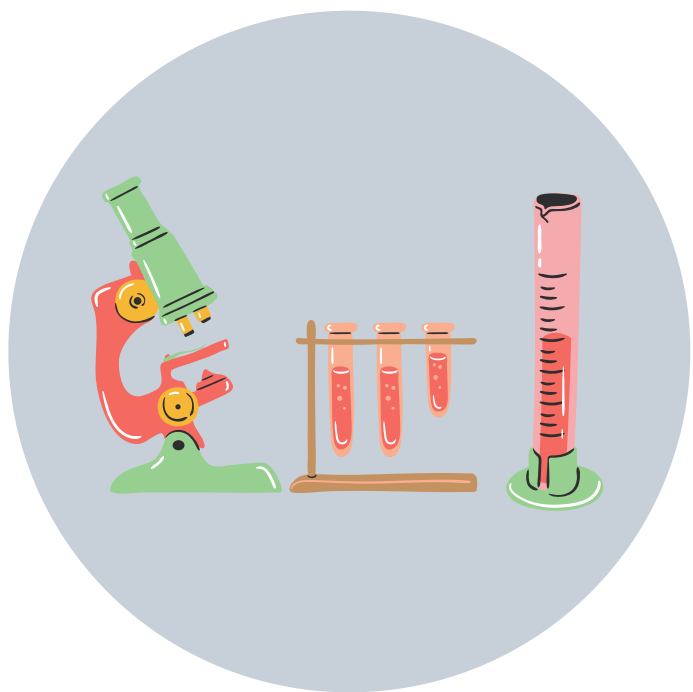


CON

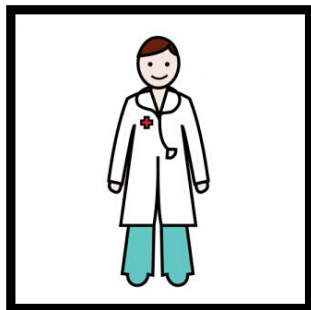


Y

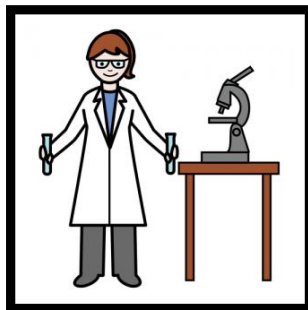




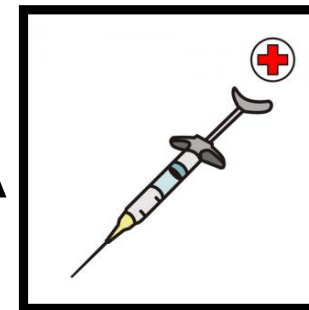
LOS

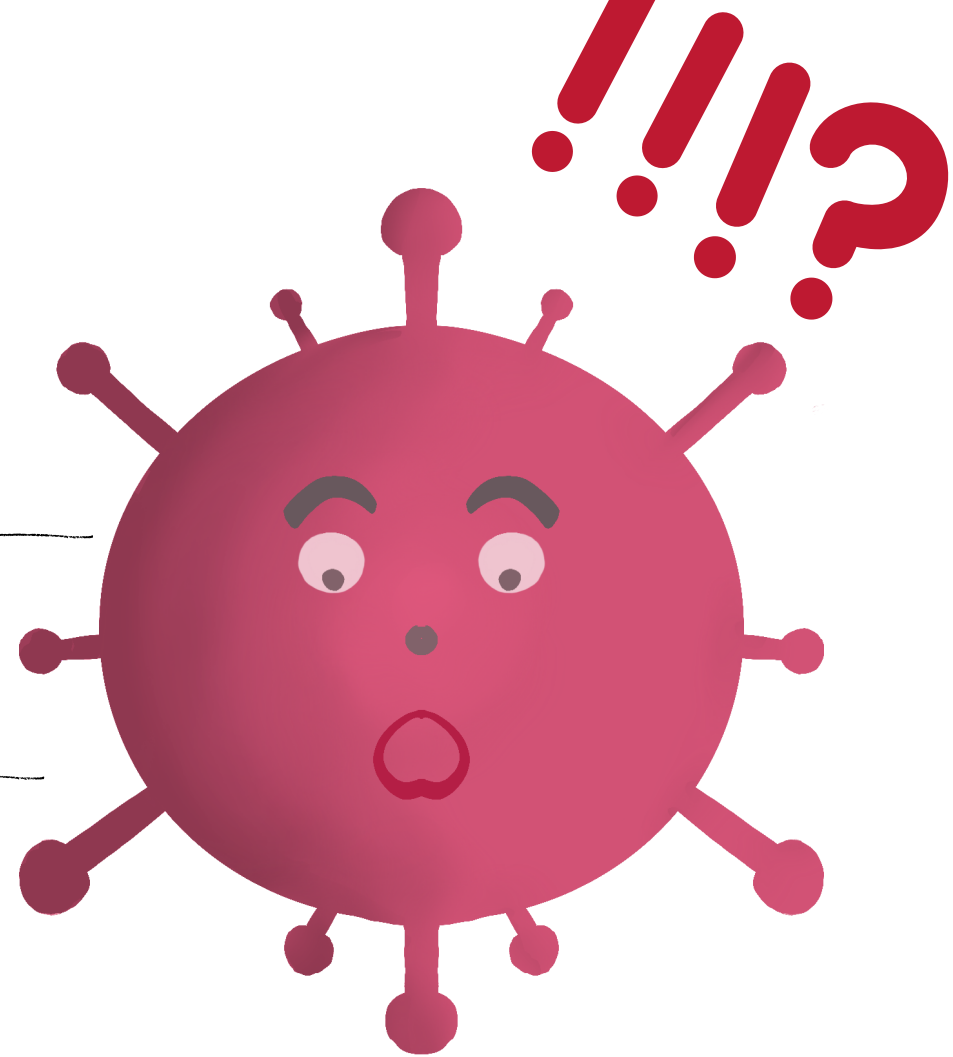


Y



UNA

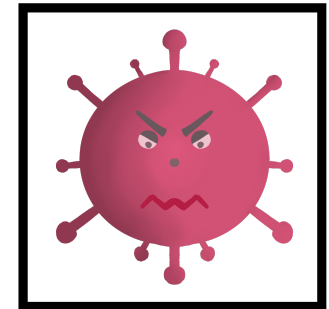
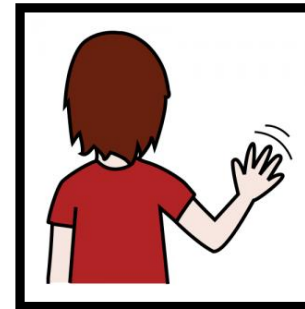
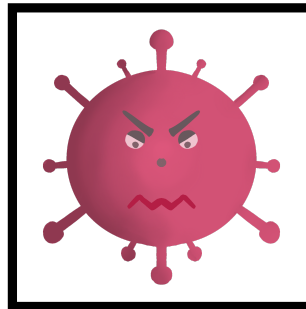


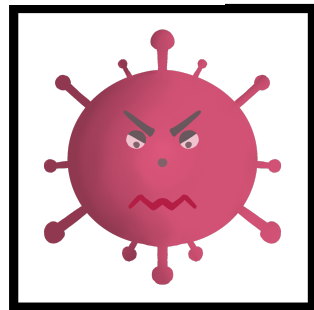
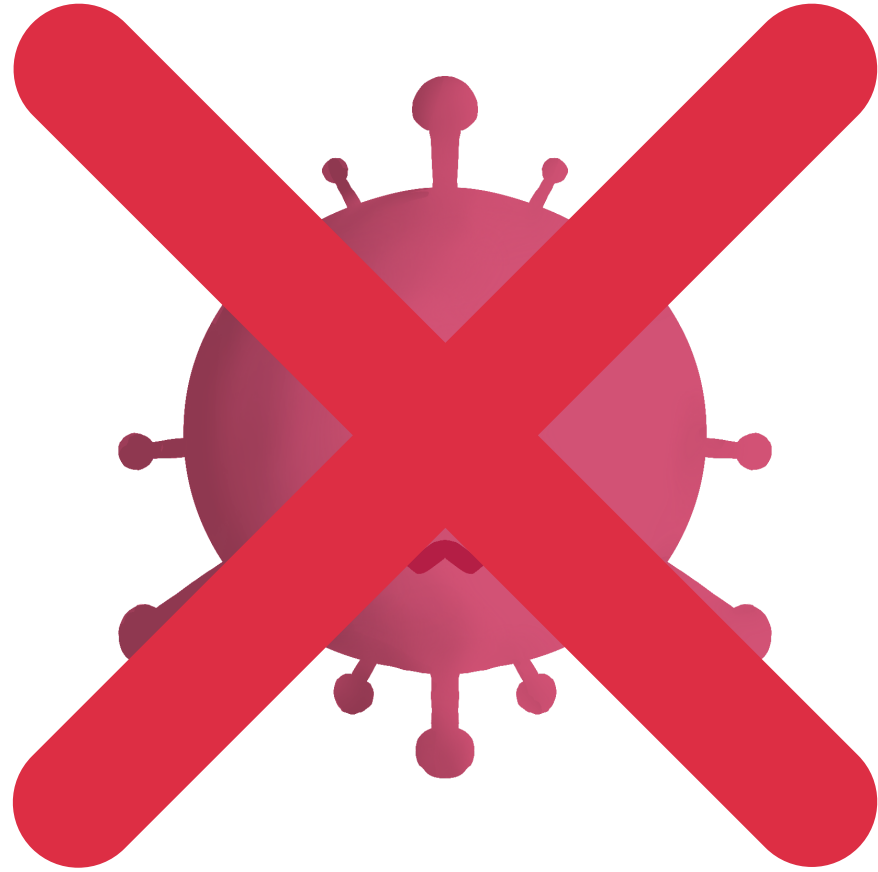


LA

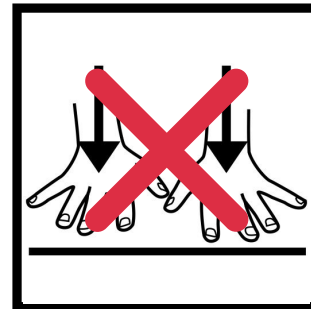


A

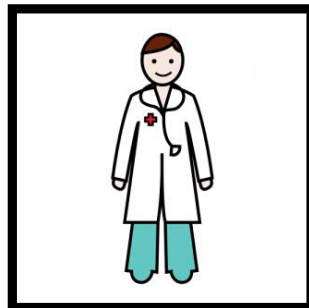




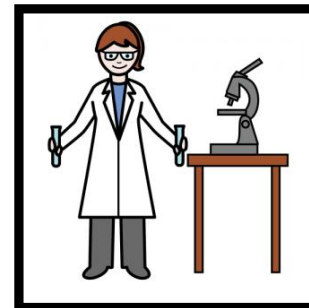
YA NO

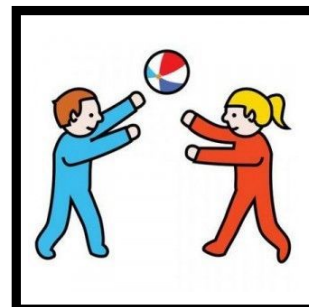
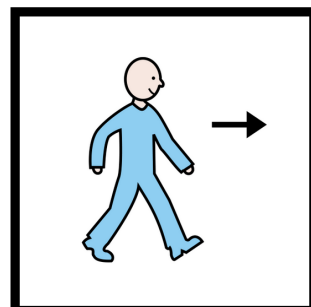
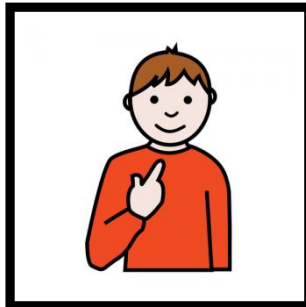


GRACIAS



Y





EN LA

